

Cookie policy



Cookie policy

We (People's Partnership Limited) use cookies on our websites to help give you the best experience we can.

If you'd like to remove or refuse cookies, you can learn how to below – see 'What to do about unwanted cookies or adverts'. However, this may mean our website won't work in the way you'd expect.

Warning: if you use your web browser settings to refuse all cookies, you won't be able to log in to your Online Account with us.

What are cookies?

Cookies are small text files that are placed on your device (such as a computer or mobile phone) when you browse websites. Almost all websites use them. They help us to distinguish you from other visitors. They also help us to customise our web pages by remembering your preferences, such as font size.

When you return to our websites, we use the information in the cookie to recognise your last session. This improves the quality of your experience on our websites.

Why do we use cookies?

We use cookies to make our websites work as you'd expect. They also help us to:

- continually improve our websites
- improve speed and security of our websites
- remember your search settings during and between visits
- let you share pages with social networks like Facebook and add comments to our site
- make our marketing more efficient so you should only see advertising or promotions that are relevant to you, eg via Google or Facebook.

We don't use cookies to:

- collect any personally identifiable or sensitive information
- send personally identifiable data to third parties.

What type of cookies do we use?

| Area of website | Page |
|-----------------------------|------|
| Online Account (MyProducts) | 2 |
| The People's Pension | 9 |
| People's Partnership | 13 |
| B&CE | 16 |
| Adviser Hub | 19 |
| Employer Online Services | 24 |
| Developer Hub | 28 |
| Additional information | 30 |

Online Account (MyProducts)

| Cookie type | Name | Where we use it | Why we use it and how long it lasts | Cookie category |
|--------------------|---------------------------|-----------------------------|---|-----------------|
| Third-party cookie | cookieyesID | Online Account (MyProducts) | Used as a unique identifier for visitors according to their consent. Expires after 12 months. | Necessary |
| Third-party cookie | cookieyes-necessary | Online Account (MyProducts) | Used to remember the consent of users for the use of cookies in the 'Necessary' category. Expires after 12 months. | Necessary |
| First-party cookie | _ga | Google Analytics | Used by Google Analytics to calculate visitor, session, campaign data and to keep track of site usage for the site's analytics report. The cookies store information anonymously and assign a randomly generated number to identify unique visitors. Expires after 2 years. | Analytics |
| First-party cookie | _gat_UA-83014567-1 | Google Analytics | Allows Google to limit the collection of data on high traffic sites. Expires after 1 minute. | Analytics |
| First-party cookie | _gcLau | Google Analytics | Used by Google AdSense for experimenting with advertisement efficiency across websites using their services. Expires after 2 months. | Marketing |
| First-party cookie | _gid | Google Analytics | To distinguish different users by a non-personal random number, instead of using personal information. Expires after 24 hours. | Analytics |
| First-party cookie | _RequestVerificationToken | Online Account (MyProducts) | To stop unauthorised posting of content to a website. Expires after each visit. | Necessary |

Online Account (MyProducts)

| Cookie type | Name | Where we use it | Why we use it and how long it lasts | Cookie category |
|--------------------|-------------------|-----------------------------|--|-----------------|
| Third-party cookie | _uetsid | B&CE website | Used by Microsoft Bing Ads. It allows us to engage with a user that has previously visited our website. Expires after 24 hours. | Marketing |
| Third-party cookie | _uetvid | Online Account (MyProducts) | Used to allow us to engage with a user that has previously visited our website. Expires after 12 months. | Marketing |
| Third-party cookie | ai_session | Online Account (MyProducts) | Associated with the Microsoft Application Insights software, which collects statistical usage and telemetry information for apps built on the Azure cloud platform. Expires after 1 day. | Functional |
| Third-party cookie | ai_user | Online Account (MyProducts) | Used for the collection of statistical usage and telemetry information for applications built on the Azure cloud platform. Expires after 12 months. | Analytics |
| First-party cookie | ASP.NET_SessionId | Online Account (MyProducts) | For security checks after login. Expires after each visit. | Necessary |
| Third-party cookie | cky-action | Online Account (MyProducts) | Used to remember the action taken by the user. Expires after 12 months. | Necessary |
| Third-party cookie | cky-consent | Online Account (MyProducts) | Used to remember the users' consent settings so that the website recognises the users the next time they visit. Expires after 12 months. | Necessary |

Online Account (MyProducts)

| Cookie type | Name | Where we use it | Why we use it and how long it lasts | Cookie category |
|--------------------|--------------------------|-----------------------------|--|-----------------|
| Third-party cookie | cookieeyes-advertisement | Online Account (MyProducts) | Used to remember the consent of users for the use of cookies in the 'Advertisement' category. Expires after 12 months. | Necessary |
| Third-party cookie | cookieeyes-analytics | Online Account (MyProducts) | Used to remember the consent of users for the use of cookies in the 'Analytics' category. Expires after 12 months. | Necessary |
| Third-party cookie | MUID | Bing | This cookie is widely used by Microsoft as a unique user identifier to allow user tracking. Expires after 12 months. | Analytics |
| Third-party cookie | cookieeyes-functional | Online Account (MyProducts) | Used to remember the consent of users for the use of cookies in the 'Functional' category. Expires after 12 months. | Necessary |

Online Account (MyProducts)

| Cookie type | Name | Where we use it | Why we use it and how long it lasts | Cookie category |
|--------------------|----------------------|-----------------------------|--|--------------------|
| First-party cookie | x-ms-cpim-admin | Online Account (MyProducts) | Holds user membership data. Expires at the end of the browser session. | Strictly necessary |
| First-party cookie | x-ms-cpim-slice | Online Account (MyProducts) | Used to send requests to the appropriate place at that time. Expires at the end of the browser session. | Strictly necessary |
| First-party cookie | x-ms-cpim-trans | Online Account (MyProducts) | Used for tracking the transactions (number of authentication requests to Azure Active Directory B2C) and the current transaction. Expires at the end of the browser session. | Strictly necessary |
| First-party cookie | x-ms-cpim-ssol:ld | Online Account (MyProducts) | Used for maintaining the single sign-on session. This cookie is set as persistent, when 'Keep me signed in' is enabled. Expires at the end of the browser session. | Strictly necessary |
| First-party cookie | x-ms-cpim-cache:ld_n | Online Account (MyProducts) | Used for maintaining the request state. Expires at the end of the browser session or after successful authentication. | Strictly necessary |
| First-party cookie | x-ms-cpim-csrf | Online Account (MyProducts) | Cross-Site Request Forgery (CSRF) token used for CSRF protection. Expires at the end of the browser session. | Strictly necessary |
| First-party cookie | x-ms-cpim-dc | Online Account (MyProducts) | Used for Azure Active Directory B2C network routing. Expires at the end of the browser session. | Strictly necessary |

Online Account (MyProducts)

| Cookie type | Name | Where we use it | Why we use it and how long it lasts | Cookie category |
|--------------------|--------------------------------|-----------------------------|--|--------------------|
| First-party cookie | x-ms-cpim-ctx | Online Account (MyProducts) | Used for context information within the login/access process. Expires at the end of the browser session. | Strictly necessary |
| First-party cookie | x-ms-cpim-rp | Online Account (MyProducts) | Used for storing membership data. Expires at the end of the browser session. | Strictly necessary |
| First-party cookie | x-ms-cpim-rc | Online Account (MyProducts) | Used for storing the relay cookie. Expires at the end of the browser session. | Strictly necessary |
| Third-party cookie | _fbp | Facebook | _fbp summary cookie is used by Facebook to store and track visits across websites for marketing purposes. Expires after 90 days. | Marketing |
| First-party cookie | ApplicationGatewayAffinity | Online Account (MyProducts) | This cookie is used by Azure Application Gateway to direct subsequent traffic from a user's session to the same server for processing (known as session-based affinity). Expires after 30 minutes. | Necessary |
| First-party cookie | ApplicationGatewayAffinityCORS | Online Account (MyProducts) | Azure Application Gateway uses gateway-managed cookies for maintaining user sessions. | Necessary |
| Third-party cookie | li_sugr | LinkedIn | Used by LinkedIn to store and track a visitor's identity. Expires after 30 days. | Marketing |

Online Account (MyProducts)

| Cookie type | Name | Where we use it | Why we use it and how long it lasts | Cookie category |
|--------------------|------------------------------|-----------------------------|--|-----------------|
| Third-party cookie | _hjAbsoluteSessionInProgress | Online Account (MyProducts) | Used to detect the first page view session of a user. Expires after 30 minutes. | Analytics |
| Third-party cookie | _hjIncludedInSessionSample | Online Account (MyProducts) | Used to determine if a user is included in the data sampling defined by our site's daily session limit. Expires after 30 minutes. | Analytics |
| Third-party cookie | _hjSession_1538465 | Online Account (MyProducts) | Holds current session data and ensures subsequent requests in the session window are attributed to the same session. Expires after 30 minutes. | Analytics |
| Third-party cookie | _hjSessionUser_1538465 | Online Account (MyProducts) | Ensures data from subsequent visits to the same site are attributed to the same user ID. Expires after 12 months. | Analytics |
| Third-party cookie | Bcookie | LinkedIn | Used by the social networking service, LinkedIn, for tracking the use of embedded services. Expires after 2 years. | Marketing |
| Third-party cookie | IDE | doubleclick.net | To measure a visitor's actions after they click through from an advert. Expires after 1 year. | Marketing |
| Third-party cookie | li_gc | LinkedIn | Used to store guest consent for the use of cookies for non-essential purposes. Expires after 2 years. | Functional |

Online Account (MyProducts)

| Cookie type | Name | Where we use it | Why we use it and how long it lasts | Cookie category |
|--------------------|-----------------------|--------------------|---|-----------------|
| Third-party cookie | Lidc | LinkedIn | LinkedIn Share button and advertising tags. Expires after 24 hours. | Marketing |
| First-party cookie | _dc_gtm_UA-83014567-1 | Google Tag Manager | To identify visitors by age, gender or interests in Google Tag Manager. Expires after each visit. | Analytics |

| Cookie type | Name | Where we use it | Why we use it and how long it lasts | Cookie category |
|--------------------|------------------------------|------------------------------|--|-----------------|
| First-party cookie | personalisation_picked | The People's Pension website | Used to store the choice a user makes about which audience they fall into, so the next time they visit the site they are served the relevant audience content and don't need to select this again each time. Expires after 2 months. | Functional |
| First-party cookie | Recite.Preferences | The People's Pension website | Used to store the recite toolbar preferences. Expires after 12 months. | Functional |
| Third-party cookie | RT | The People's Pension website | When an end-user browses to a site that's instrumented with mPulse, Boomerang generates an RT cookie. It contains various pieces of information about the user's session, as viewed by Boomerang. Expires after 7 days. | Analytics |
| First-party cookie | _dc_gtm_UA-83014567-1 | Google Tag Manager | To identify visitors by age, gender or interests in Google Tag Manager. Expires after each visit. | Necessary |
| First-party cookie | _ga | Google Analytics | To identify unique users. Expires after 2 years. | Analytics |
| Third-party cookie | _hjAbsoluteSessionInProgress | The People's Pension website | Used to detect the first page view session of a user. Expires after 30 minutes. | Analytics |
| First-party cookie | _gid | Google Analytics | To distinguish different users by a non-personal random number, instead of using personal information. Expires after 24 hours. | Analytics |

| Cookie type | Name | Where we use it | Why we use it and how long it lasts | Cookie category |
|--------------------|----------------------------|------------------------------|--|-----------------|
| Third-party cookie | _hjid | The People's Pension website | Used to ensure data from subsequent visits to the same site are attributed to the same user ID. Expires after 12 months. | Analytics |
| Third-party cookie | _hjIncludedInSessionSample | The People's Pension website | Used to determine if a user is included in the data sampling defined by your site's daily session limit. Expires after 30 minutes. | Analytics |
| Third-party cookie | _hjSession_1538465 | The People's Pension website | Holds current session data and ensures subsequent requests in the session window are attributed to the same session. Expires after 30 minutes. | Analytics |
| First-party cookie | _gcl_au | The People's Pension website | Used by Google AdSense for experimenting with advertisement efficiency across websites using their services. Expires after 3 months. | Marketing |
| Third-party cookie | _hjSessionUser_1538465 | The People's Pension website | Ensures data from subsequent visits to the same site are attributed to the same user ID. Expires after 12 months. | Analytics |
| First-party cookie | PHPSESSID | The People's Pension website | To store a simple message when a form is submitted that can be displayed on a different page. Expires after each visit. | Functional |
| First-party cookie | Recite.Persist | The People's Pension website | This stores a flag to indicate whether toolbar should persist between pages or not. Expires after each visit. | Functional |

The People's Pension

| Cookie type | Name | Where we use it | Why we use it and how long it lasts | Cookie category |
|--------------------|-----------------------------------|------------------------------|---|-----------------|
| Third-party cookie | IDE | doubleclick.net | To measure visitors' actions after they click through from an advert. Expires after 1 year. | Marketing |
| Third-party cookie | Bcookie | LinkedIn | Used by the social networking service, LinkedIn, for tracking the use of embedded services. Expires after 2 years. | Marketing |
| Third-party cookie | Lidc | LinkedIn | LinkedIn cookie used for routing from share buttons and ad tags. Expires after 24 hours. | Marketing |
| First-party cookie | cookieawinfo-checkbox-functional | The People's Pension website | Used to check whether or not the user has given the consent to the usage of cookies under the category 'functional'. Expires after 12 months. | Necessary |
| First-party cookie | cookieawinfo-checkbox-marketing | The People's Pension website | Used to check whether or not the user has given consent to the usage of cookies under the category 'marketing'. Expires after 12 months. | Necessary |
| First-party cookie | cookieawinfo-checkbox-necessary | The People's Pension website | Used to check whether or not the user has given the consent to the usage of cookies under the category 'Necessary'. Expires after 12 months. | Necessary |
| First-party cookie | cookieawinfo-checkbox-performance | The People's Pension website | This cookie is set by the GDPR Cookie Consent plugin. It's used to check whether or not the user has given consent to the usage of cookies under the category 'performance'. Expires after 12 months. | Necessary |

| Cookie type | Name | Where we use it | Why we use it and how long it lasts | Cookie category |
|--------------------|----------------------|------------------------------|---|-----------------|
| First-party cookie | CookieLawInfoConsent | The People's Pension website | Used to record the default button state of the corresponding category and the status of CCPA. It works only in coordination with the primary cookie. Expires after 12 months. | Necessary |
| Third-party cookie | MUID | Bing | Used to Identify unique web browsers visiting Microsoft sites. These cookies are used for advertising, site analytics, and other operational purposes. Expires after 12 months. | Marketing |
| Third-party cookie | _uetsid | Bing Ads | Used by Bing Ads to store and track visits across websites. Expires after 1 day. | Marketing |
| Third-party cookie | _uetvid | Bing Ads | Used by Bing Ads to store and track visits across websites. Expires after 1 day. | Marketing |
| Third-party cookie | li_sugr | LinkedIn | Used by LinkedIn to store and track a visitor's identity. Expires after 30 days. | Marketing |
| Third-party cookie | muc_ads | X (formerly Twitter) | This is set by X (formally known as Twitter) and is used for optimizing ad relevance by collecting a visitor's navigation data. Expires after 12 months. | Marketing |
| Third-party cookie | SID | YouTube | Used by Google to provide security protection. Expires after 2 years. | Functional |

| Cookie type | Name | Where we use it | Why we use it and how long it lasts | Cookie category |
|--------------------|------------------------------------|------------------------------|---|-----------------|
| First-party cookie | cookieLawInfo-checkbox-functional | Peoples Partnership | The cookie is set by the GDPR Cookie Consent plugin and is used to store whether or not user has consented to the use of functional cookies. Expires after 12 months. | Necessary |
| First-party cookie | cookieLawInfo-checkbox-necessary | Peoples Partnership | The cookie is set by the GDPR Cookie Consent plugin and is used to store whether or not user has consented to the use of Necessary cookies. Expires after 12 months. | Necessary |
| First-party cookie | cookieLawInfo-checkbox-performance | Peoples Partnership | The cookie is set by the GDPR Cookie Consent plugin and is used to store whether or not user has consented to the use of performance cookies. Expires after 12 months. | Necessary |
| First-party cookie | CookieLawInfoConsent | Peoples Partnership | Used to record the default button state of the corresponding category & the status of CCPA. It works only in coordination with the primary cookie. Expires after 12 months. | Necessary |
| First-party cookie | global_notification_id | People's Partnership website | Used by our website to display a global notification. Expires after 30 days. | Necessary |
| First-party cookie | global_notification_dismissed | People's Partnership website | Used by our website to detect if the global notification has been dismissed. Expires after 30 days. | Necessary |

| Cookie type | Name | Where we use it | Why we use it and how long it lasts | Cookie category |
|--------------------|--------------------|------------------|---|-----------------|
| Third-party cookie | SOCS | Google | Used by Google to store a user's state about their cookie choices. Expires after 24 hours. | Functional |
| Third-party cookie | CONSENT | Google Analytics | Used to detect if the visitor has accepted the marketing category in the cookie banner. This cookie is necessary for GDPR-compliance of the website. | Marketing |
| First-party cookie | _ga | Google Analytics | To identify unique users. Expires after 2 years. | Marketing |
| First-party cookie | _gat_UA-83014567-1 | Google Analytics | To limit requests to Google Analytics. Expires after 1 minute. | Analytics |
| First-party cookie | _gcLau | Google AdSense | Used by Google AdSense for experimenting with advertisement efficiency across websites using their services. Expires after 3 months. | Marketing |
| Third-party cookie | NID | Google | Google uses cookies like the PREF cookie, NID and SID to contribute to the personalisation of the ads in Google properties, like Google search. Expires after 6 months. | Marketing |
| First-party cookie | _gid | Google | To distinguish different users by a non-personal random number, instead of using personal information. Expires after 24 hours. | Analytics |

| Cookie type | Name | Where we use it | Why we use it and how long it lasts | Cookie category |
|--------------------|-----------------------|------------------------------|---|-----------------|
| First-party cookie | _dc_gtm_UA-83014567-1 | Google Tag Manager | To identify visitors by age, gender or interests in Google Tag Manager. Expires after each visit. | Necessary |
| Third-party cookie | IDE | doubleclick.net | To measure a visitor's actions after they click through from an advert. Expires after 1 year. | Marketing |
| Third-party cookie | AEC | Google Analytics | Used to ensure that requests within a browsing session are made by the user, and not by other sites. These cookies prevent malicious sites from acting on behalf of a user without that user's knowledge. Expires after 6 months. | Functional |
| Third-party cookie | _fbp | Facebook | _fbp summary cookie is used by Facebook to store and track visits across websites for marketing purposes. Expires after 90 days. | Marketing |
| Third-party cookie | _uetsid | People's Partnership website | Used by Microsoft Bing Ads. It allows us to engage with a user who has previously visited our website. Expires after 24 hours. | Marketing |
| Third-party cookie | _uetvid | People's Partnership website | Used to allow us to engage with a user who has previously visited our website. Expires after 12 months. | Marketing |
| Third-party cookie | VISITOR_INFO1_LIVE | YouTube | To allow YouTube to collect usage information for YouTube hosted videos. Expires after 179 days. | Analytics |
| Third-party cookie | YSC | YouTube | To allow YouTube to collect usage information for YouTube hosted videos. Expires after each visit. | Analytics |

| Cookie type | Name | Where we use it | Why we use it and how long it lasts | Cookie category |
|--------------------|-----------------------|------------------------------|--|-----------------|
| First-party cookie | _dc_gtm_UA-83014567-1 | Google Tag Manager | To identify visitors by age, gender or interests in Google Tag Manager. Expires after each visit. | Necessary |
| First-party cookie | _ga | Google Analytics | To identify unique users. Expires after 2 years. | Analytics |
| First-party cookie | _gid | Google Analytics | To distinguish different visitors by a non-personal random number, instead of using personal information. Expires after 24 hours. | Analytics |
| First-party cookie | _gcl_au | Google AdSense | Used by Google AdSense for experimenting with advertisement efficiency across websites using their services. Expires after 3 months. | Marketing |
| Third-party cookie | UserMatchHistory | LinkedIn | Used by LinkedIn Ads ID syncing. Expires after 30 days. | Marketing |
| First-party cookie | _gat_UA-83014567-1 | The People's Pension website | To limit requests to Google Analytics. Expires after 1 minute. | Analytics |
| Third-party cookie | bcookie | LinkedIn | Used by the social networking service, LinkedIn, for tracking the use of embedded services. Expires after 2 years. | Marketing |
| Third-party cookie | IDE | doubleclick.net | To measure the visitors' actions after they click through from an advert. Expires after 1 year. | Marketing |

| Cookie type | Name | Where we use it | Why we use it and how long it lasts | Cookie category |
|--------------------|--------------------------|-----------------|---|-----------------|
| Third-party cookie | li_gc | LinkedIn | Used to store guest consent for the use of cookies for non-essential purposes. Expires after 2 years. | Functional |
| Third-party cookie | Lidc | LinkedIn | LinkedIn Share button and advertising tags. Expires after 24 hours. | Marketing |
| Third-party cookie | VISITOR_INFO1_LIVE | YouTube | To keep track of user preferences for YouTube videos embedded in sites. It can also determine whether the website visitor is using the new or old version of the YouTube interface. Expires after 6 months. | Analytics |
| Third-party cookie | YSC | YouTube | To track views of embedded videos. Expires after each visit. | Analytics |
| Third-party cookie | _fbp | Facebook | _fbp summary cookie is used by Facebook to store and track visits across websites for marketing purposes. Expires after 90 days. | Marketing |
| Third-party cookie | Bscookie | LinkedIn | Used by the social networking service, LinkedIn, to remember a previously logged in user. Expires after 1 year. | Marketing |
| Third-party cookie | cookieeyes-advertisement | B&CE website | Used to remember the consent of users for the use of cookies in the 'Advertisement' category. Expires after 12 months. | Necessary |
| Third-party cookie | cookieeyes-analytics | B&CE website | Used to remember the consent of users for the use of cookies in the 'Analytics' category. Expires after 12 months. | Necessary |

| Cookie type | Name | Where we use it | Why we use it and how long it lasts | Cookie category |
|--------------------|----------------------|-----------------|--|-----------------|
| Third-party cookie | cookieyes-functional | B&CE website | Used to remember the consent of users for the use of cookies in the 'Functional' category. Expires after 12 months. | Necessary |
| Third-party cookie | cookieyesID | B&CE website | Used as a unique identifier for visitors according to their consent. Expires after 12 months. | Necessary |
| Third-party cookie | cookieyes-necessary | B&CE website | Used to remember the consent of users for the use of cookies in the 'Necessary' category. Expires after 12 months. | Necessary |
| Third-party cookie | cookieyes-other | B&CE website | Used to remember the consent of users for the use of cookies in the 'Other' category. Expires after 12 months. | Necessary |
| Third-party cookie | li_sugr | LinkedIn | Used by LinkedIn to store and track a visitor's identity. Expires after 30 days. | Marketing |
| Third-party cookie | UserMatchHistory | LinkedIn | Used by LinkedIn Ads ID syncing. Expires after 30 days. | Marketing |
| Third-party cookie | cky-action | B&CE website | The cookie is set by CookieYes to remember the user's consent to the use of cookies on the website. Expires after 12 months. | Necessary |
| Third-party cookie | cky-consent | B&CE website | Used to remember the action taken by the user. Expires after 12 months. | Necessary |

| Cookie type | Name | Where we use it | Why we use it and how long it lasts | Cookie category |
|--------------------|-----------------------|--|--|-----------------|
| First-party cookie | _dc_gtm_UA-83014567-1 | The People's Pension website – Adviser Hub | To identify visitors by age, gender or interests in Google Tag Manager. Expires after each visit. | Analytics |
| First-party cookie | _ga | The People's Pension website – Adviser Hub | To identify unique users. Expires after 2 years. | Marketing |
| First-party cookie | _gat | The People's Pension website – Adviser Hub | To limit requests to Google Analytics. Expires after 1 minute. | Analytics |
| First-party cookie | _gat_UA-34386883-2 | The People's Pension website – Adviser Hub | To limit requests to Google Analytics. Expires after 1 minute. | Analytics |
| First-party cookie | _gid | The People's Pension website – Adviser Hub | To distinguish different users by a non-personal random number, instead of using personal information. Expires after 24 hours. | Analytics |
| Third-party cookie | IDE | The People's Pension website – Adviser Hub | To measure the visitors' actions after they click through from an advert. Expires after 12 months. | Marketing |
| First-party cookie | wordpress_logged_in_ | The People's Pension website – Adviser Hub | To help us keep you logged in to our site. Expires after each visit. | Necessary |

| Cookie type | Name | Where we use it | Why we use it and how long it lasts | Cookie category |
|--------------------|------------------------|--|--|-----------------|
| First-party cookie | wordpress_sec_ | The People's Pension website – Adviser Hub | To help us keep you logged in to our site. Expires after each visit. | Necessary |
| First-party cookie | _gcl_au | The People's Pension website – Adviser Hub | Used by Google AdSense for experimenting with advertisement efficiency across websites using their services. Expires after 3 months. | Marketing |
| Third-party cookie | _hjSessionUser_1538465 | The People's Pension website – Adviser Hub | This cookie is set when a user first lands on a page. It ensures data from subsequent visits to the same site are attributed to the same user ID. Expires after 12 months. | Analytics |
| Third-party cookie | _uetvid | The People's Pension website – Adviser Hub | Used by bing.com to store and track visits across websites. Expires after 12 months. | Marketing |
| First-party cookie | mf_[website-id] | The People's Pension website – Adviser Hub | Used by our session recording tool 'Mouseflow' to record behaviours prior to logging in. Expires at the end of the session. | Analytics |
| First-party cookie | Mf_user | The People's Pension website – Adviser Hub | Used by our session recording tool 'Mouseflow' to record if someone is a new or returning user. Expires after 90 days. | Analytics |
| First-party cookie | userTypeValue | The People's Pension website – Adviser Hub | Used to identify the type of customer (member, employer or adviser), we think the session belongs to. Expires at the end of the session. | Analytics |

| Cookie type | Name | Where we use it | Why we use it and how long it lasts | Cookie category |
|--------------------|----------------------------|--|--|-----------------|
| Third-party cookie | _hjFirstSeen | Hotjar | Identifies a new user's first session. Used by recording filters to identify new user sessions. Expires after 30 minutes. | Marketing |
| First-party cookie | bandce_oauth_state | The People's Pension website – Adviser Hub | Used as part of secure authentication. Expires after 30 minutes. | Necessary |
| Third-party cookie | _fbp | Facebook | _fbp summary cookie is used by Facebook to store and track visits across websites for marketing purposes. Expires after 90 days. | Marketing |
| Third-party cookie | _hjIncludedInSessionSample | Hotjar | Used to determine if a user is included in the data sampling defined by our site's daily session limit. Expires after 30 minutes. | Analytics |
| Third-party cookie | _hjSession_1538465 | Hotjar | Holds current session data and ensures subsequent requests in the session window are attributed to the same session. Expires after 30 minutes. | Analytics |
| Third-party cookie | _hjSessionUser_1538465 | Hotjar | Ensures data from subsequent visits to the same site are attributed to the same user ID. Expires after 12 months. | Analytics |
| Third-party cookie | cookieeyes-advertisement | The People's Pension website – Adviser Hub | Used to remember the consent of users for the use of cookies in the 'Advertisement' category. Expires after 12 months. | Necessary |

| Cookie type | Name | Where we use it | Why we use it and how long it lasts | Cookie category |
|--------------------|------------------------|--|--|-----------------|
| Third-party cookie | cookieeyes-analytics | The People's Pension website – Adviser Hub | Used to remember the consent of users for the use of cookies in the 'Analytics' category. Expires after 12 months. | Necessary |
| Third-party cookie | cookieeyes-functional | The People's Pension website – Adviser Hub | Used to remember the consent of users for the use of cookies in the 'Functional' category. Expires after 12 months. | Necessary |
| Third-party cookie | cookieeyesID | The People's Pension website – Adviser Hub | Used as a unique identifier for visitors according to their consent. Expires after 12 months. | Necessary |
| Third-party cookie | cookieeyes-necessary | The People's Pension website – Adviser Hub | Used to remember the consent of users for the use of cookies in the 'Necessary' category. Expires after 12 months. | Necessary |
| Third-party cookie | cookieeyes-other | The People's Pension website – Adviser Hub | Used to remember the consent of users for the use of cookies in the 'Other' category. Expires after 12 months. | Necessary |
| Third-party cookie | cookieeyes-performance | The People's Pension website – Adviser Hub | Used to remember the consent of users for the use of cookies in the 'Performance' category. Expires after 12 months. | Necessary |
| Third-party cookie | cky-action | The People's Pension website – Adviser Hub | The cookie is set by CookieYes to remember the user's consent to the use of cookies on the website. Expires after 12 months. | Necessary |

Adviser Hub

| Cookie type | Name | Where we use it | Why we use it and how long it lasts | Cookie category |
|--------------------|-------------|--|---|-----------------|
| Third-party cookie | cky-consent | The People's Pension website – Adviser Hub | Used to remember the action taken by the user. Expires after 12 months. | Necessary |
| Third-party cookie | _uetsid | Bing | Used by Microsoft Bing Ads. It allows us to engage with a user who has previously visited our website. Expires after 24 hours. | Marketing |
| Third-party cookie | RT | The People's Pension website – Adviser Hub | When an end-user moves to a site that uses mPulse, Boomerang generates an RT cookie. It includes various pieces of information, about the user's session, as viewed by Boomerang. Expires after 7 days. | Analytics |

Employer Online Services

| Cookie type | Name | Where we use it | Why we use it and how long it lasts | Cookie category |
|--------------------|-----------------------|---|--|-----------------|
| First-party cookie | .ASPXFORMSAUTH | People's Partnership - Employer Online Services | To enable visitors to log in to the site, and for us to check who they are. This cookie is necessary for our site. Expires after 30 minutes. | Necessary |
| First-party cookie | ASP.NET_SessionId | People's Partnership - Employer Online Services | To enable us store data from each visitor session. Expires after 30 minutes. | Necessary |
| First-party cookie | _gat_UA-34386883-2 | People's Partnership website | Allows google to limit the collection of data on high traffic sites. Expires after 1 minute. | Analytics |
| First-party cookie | _dc_gtm_UA-34386883-2 | People's Partnership website | Used to enable us to track user behaviour on a page. This helps us to keep improving the website for users. Expires after 1 minute. | Necessary |
| First-party cookie | _dc_gtm_UA-37150123-1 | People's Partnership website | Used to enable us to track user behaviour on a page. This helps us to keep improving the website for users. Expires after 1 minute. | Necessary |
| First-party cookie | _gcl_au | People's Partnership website | Used by Google AdSense for experimenting with advertisement efficiency across websites using their services. Expires after 2 months. | Marketing |
| First-party cookie | _gat_UA-83014567-1 | People's Partnership - Employer Online Services | Allows Google to limit the collection of data on high traffic sites. Expires after 1 minute. | Analytics |

Employer Online Services

| Cookie type | Name | Where we use it | Why we use it and how long it lasts | Cookie category |
|--------------------|--------------|---|---|-----------------|
| First-party cookie | _uetvid | People's Partnership website | Used to store and track visits across websites. Expires after 13 months. | Marketing |
| First-party cookie | _vwo_uuid_v2 | People's Partnership - Employer Online Services | To ensure visitors see the same version of the page when we're testing different versions. Expires after 12 months. | Analytics |
| First-party cookie | _ga | People's Partnership - Employer Online Services | Used by Google Analytics to calculate visitor, session, and campaign data and to keep track of site usage for the site's analytics report. The cookies store information anonymously and assign a randomly generated number to identify unique visitors. Expires after 2 years. | Analytics |
| First-party cookie | ai_session | People's Partnership - Employer Online Services | To collect statistical usage and remotely measure information for apps built on the Azure cloud platform. This is a unique anonymous session identifier cookie. Expires after each visit. | Analytics |
| First-party cookie | _gid | People's Partnership website | To distinguish different users by a non-personal random number, instead of using personal information. Expires after 24 hours. | Analytics |
| First-party cookie | ai_user | People's Partnership - Employer Online Services | To collect statistical usage and remotely measure information for apps built on the Azure cloud platform. This is a unique user identifier cookie that allows for the tracking of the number of users who access the application over time. Expires after 12 months. | Performance |

Employer Online Services

| Cookie type | Name | Where we use it | Why we use it and how long it lasts | Cookie category |
|--------------------|---------|--------------------------|--|-----------------|
| Third-party cookie | MUID | Bing | This cookie is widely used by Microsoft as a unique user identifier to allow user tracking. Expires after 12 months. | Marketing |
| Third-party cookie | _fbp | Facebook | _fbp summary cookie is used by Facebook to store and track visits across websites for marketing purposes. Expires after 90 days. | Marketing |
| Third-party cookie | _uetsid | Employer Online Services | Used by Microsoft Bing Ads. It allows us to engage with a user who has previously visited our website. Expires after 24 hours. | Marketing |
| Third-party cookie | Bcookie | LinkedIn | Used by the social networking service, LinkedIn, for tracking the use of embedded services. Expires after 2 years. | Marketing |
| Third-party cookie | IDE | doubleclick.net | To measure a visitor's actions after they click through from an advert. Expires after 1 year. | Marketing |
| Third-party cookie | li_sugr | LinkedIn | Used by LinkedIn to store and track a visitor's identity. Expires after 30 days. | Marketing |
| Third-party cookie | li_gc | LinkedIn | Used to store guest consent for the use of cookies for non-essential purposes. Expires after 2 years. | Functional |

Employer Online Services

| Cookie type | Name | Where we use it | Why we use it and how long it lasts | Cookie category |
|--------------------|----------------------|-----------------|--|-----------------|
| Third-party cookie | Lidc | LinkedIn | LinkedIn Share button and advertising tags. Expires after 24 hours. | Marketing |
| Third-party cookie | UserMatchHistory | LinkedIn | Used by LinkedIn Ads ID syncing. Expires after 30 days. | Marketing |
| Third-party cookie | AnalyticsSyncHistory | LinkedIn | Used to store information about the time a sync took place with the lms_analytics cookie. Expires after 30 days. | Functional |

Developer Hub

| Cookie type | Name | Where we use it | Why we use it and how long it lasts | Cookie category |
|--------------------|-------------------------|-----------------|--|-----------------|
| Third-party cookie | atlassian.xsrf.token | Developer Hub | Helps prevent XSRF attacks.. Expires after 30 minutes. | Necessary |
| Third-party cookie | cookieyes-advertisement | Developer Hub | Used to remember the consent of users for the use of cookies in the 'Advertisement' category. Expires after 12 months. | Necessary |
| Third-party cookie | cookieyes-analytics | Developer Hub | Used to remember the consent of users for the use of cookies in the 'Analytics' category. Expires after 12 months. | Necessary |
| Third-party cookie | cookieyes-functional | Developer Hub | Used to remember the consent of users for the use of cookies in the 'Functional' category. Expires after 12 months. | Necessary |
| Third-party cookie | cookieyesID | Developer Hub | Used as a unique identifier for visitors according to their consent. Expires after 12 months. | Necessary |
| Third-party cookie | cookieyes-necessary | Developer Hub | Used to remember the consent of users for the use of cookies in the 'Necessary' category. Expires after 12 months. | Necessary |
| Third-party cookie | cookieyes-other | Developer Hub | Used to remember the consent of users for the use of cookies in the 'Other' category. Expires after 12 months. | Necessary |
| Third-party cookie | cookieyes-performance | Developer Hub | Used to remember the consent of users for the use of cookies in the 'Performance' category. Expires after 12 months. | Necessary |

| Cookie type | Name | Where we use it | Why we use it and how long it lasts | Cookie category |
|--------------------|-----------------------|--------------------|--|-----------------|
| Third-party cookie | cky-action | Developer Hub | The cookie is set by CookieYes to remember the user's consent to the use of cookies on the website. Expires after 12 months. | Necessary |
| Third-party cookie | cky-consent | Developer Hub | Used to remember the action taken by the user. Expires after 12 months. | Necessary |
| First-party cookie | _gid | Google Analytics | To distinguish different users by a non-personal random number, instead of using personal information. Expires after 24 hours. | Analytics |
| First-party cookie | _gclau | Google Ad Sense | Used by Google AdSense for experimenting with advertisement efficiency across websites using their services. Expires after 3 months. | Marketing |
| First-party cookie | _ga | Google Analytics | To identify unique users. Expires after 2 years. | Analytics |
| First-party cookie | _dc_gtm_UA-83014567-1 | Google Tag Manager | To identify visitors by age, gender or interests in Google Tag Manager. Expires after each visit. | Necessary |
| First-party cookie | _gat_UA-83014567-1 | Google Analytics | Allows Google to limit the collection of data on high traffic sites. Expires after 1 minute. | Analytics |

Additional information

First-party cookies

We set first-party cookies on behalf of the website you are visiting.

Third-party cookies

Third-party cookies collect and use anonymous information about your visits and interactions with our websites. We use third-party cookies to serve and personalise advertisements for our products and services. They also ensure we implement opt-outs made via the third party.

Necessary cookies

Cookies in this category are necessary for the site to function normally, so cannot be turned off.

Analytics cookies

These cookies are used to help us improve the performance of some or all pages on our website. For instance, we use Google Analytics to look at how people navigate through our website and use this to make improvements.

Functional cookies

These cookies are used to enable certain functionality on our site such as personalisation. Disabling may lead to a poorer browsing experience.

Marketing cookies

These cookies will be used to track your preferences and only show adverts relevant to your interests.

Social website cookies

So you can easily 'Like' or share our content on social networks (such as Facebook and Twitter) we've included sharing buttons on our websites. These are set by ShareThis, AddThis and Twitter.

The privacy implications will vary from social network to social network. They depend on the privacy settings you've chosen on these networks.

Anonymous visitor statistics cookies

We use cookies to compile visitor statistics – such as how many people have visited our website, how long they spend on the site and what pages they look at.

We use Google Analytics to provide these statistics, which help us to continuously improve our website. They also tell us, on an anonymous basis, how people reached our websites (for example from a search engine) and whether they've visited before.

You can opt out of Google Analytics by using [Google's opt-out tool](#)

What to do about unwanted cookies

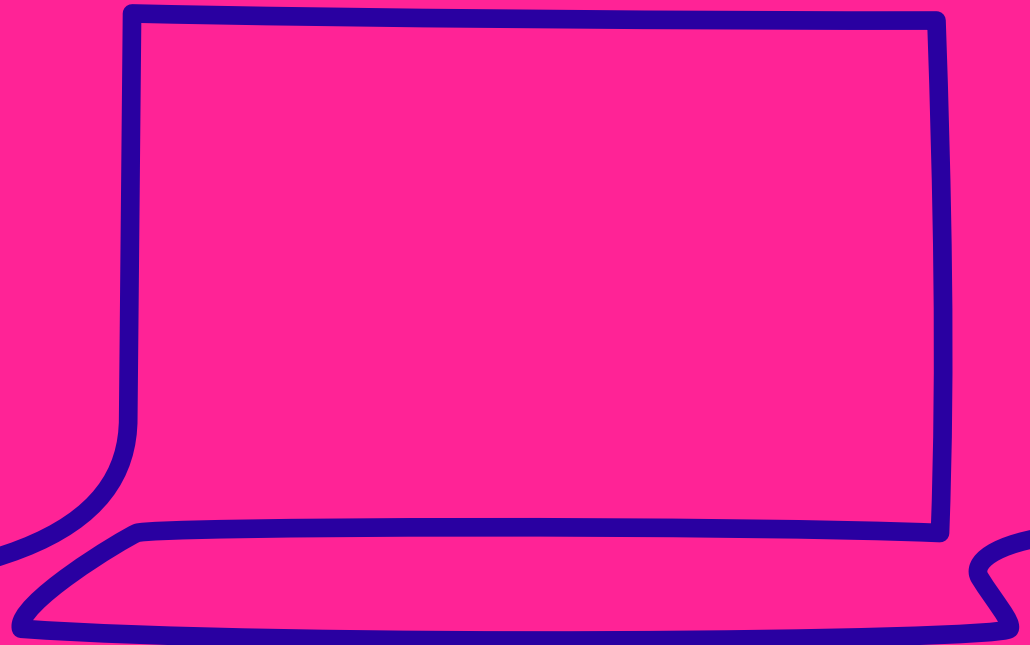
Deleting cookies. Some web browsers allow you to delete cookies. If your browser allows this, you'll be able to change your settings so that whenever you close your browser, it will delete any cookies that have been put on during that session of browsing.

Refusing cookies. Just remember that if you change your browser settings to refuse all cookies – in other words, websites won't be able to put them on your device at all – you won't be able to access your Online Account with us. If you're worried about 'spyware', then rather than refusing all cookies, you may find you can use anti-spyware software to achieve the same goal by automatically deleting cookies it thinks are invasive.

Getting a warning about cookies. You can change your browser settings to warn you before cookies are used (and get the option of using them or not). You can do this by following the instructions in your browser. These are normally in the Help, Tools, or Edit menus.

How to stop unwanted adverts

Opting out of online adverts. To stop getting online interest-based advertisements from Facebook and other participating companies, visit the [European Interactive Digital Advertising Alliance](#). You'll need to opt out separately with each browser you use.



Where to go for more information about cookies

Visit allaboutcookies.org

Or check out the [Information Commissioner's Office website](#)